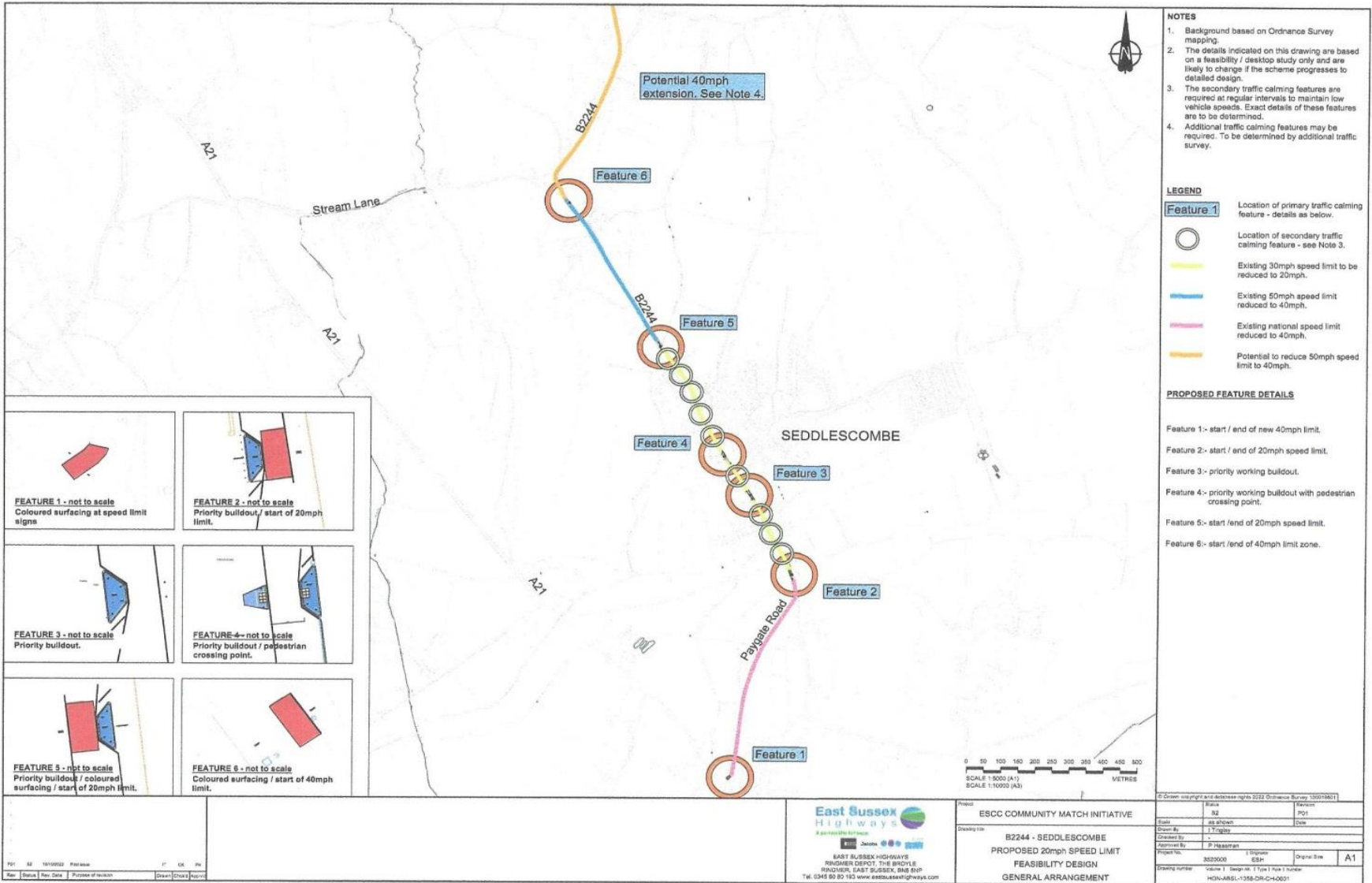




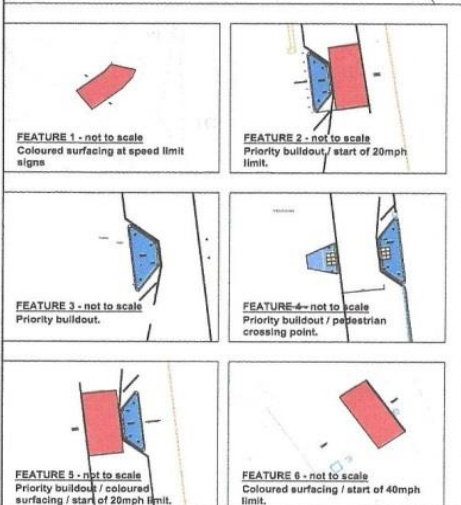
Sedlescombe Traffic-calming project Feasibility Appraisal



- NOTES**
1. Background based on Ordnance Survey mapping.
 2. The details indicated on this drawing are based on a feasibility / desktop study only and are likely to change if the scheme progresses to detailed design.
 3. The secondary traffic calming features are required at regular intervals to maintain low vehicle speeds. Exact details of these features are to be determined.
 4. Additional traffic calming features may be required. To be determined by additional traffic survey.

- LEGEND**
- Feature 1** Location of primary traffic calming feature - details as below.
- Location of secondary traffic calming feature - see Note 3.
- Existing 30mph speed limit to be reduced to 20mph.
- Existing 60mph speed limit reduced to 40mph.
- Existing national speed limit reduced to 40mph.
- Potential to reduce 50mph speed limit to 40mph.

- PROPOSED FEATURE DETAILS**
- Feature 1- start / end of new 40mph limit.
- Feature 2- start / end of 20mph speed limit.
- Feature 3- priority working buildout.
- Feature 4- priority working buildout with pedestrian crossing point.
- Feature 5- start / end of 20mph speed limit.
- Feature 6- start / end of 40mph limit zone.



<p>EAST SUSSEX HIGHWAYS RINGBURN DEPOT, THE BRODLE INDUSTRIAL, EAST SUSSEX, BN8 8XP TEL: 0345 80 80 183 www.eastsussexhighways.com</p>		<p>Project: ESCC COMMUNITY MATCH INITIATIVE</p> <p>Drawing title: B2244 - SEDDESLOCMBE</p> <p>PROPOSED 20mph SPEED LIMIT FEASIBILITY DESIGN GENERAL ARRANGEMENT</p>	<table border="1"> <tr> <td>Block:</td> <td>82</td> <td>Revision:</td> <td></td> </tr> <tr> <td>Scale:</td> <td>as shown</td> <td>PD:</td> <td>DM</td> </tr> <tr> <td>Drawn by:</td> <td>TJ/CJH</td> <td>Checked by:</td> <td></td> </tr> <tr> <td>Approved by:</td> <td>P. HARRISON</td> <td>Project No.:</td> <td>3220000</td> </tr> <tr> <td>Project No.:</td> <td>3220000</td> <td>1 of 1 sheet</td> <td>Original Size:</td> </tr> <tr> <td>Drawing number:</td> <td>Volume 1 - Design No. 11 of 1 Part 1 number</td> <td>HDRN-AMBL-1358-OR-CH-0001</td> <td>A1</td> </tr> </table>	Block:	82	Revision:		Scale:	as shown	PD:	DM	Drawn by:	TJ/CJH	Checked by:		Approved by:	P. HARRISON	Project No.:	3220000	Project No.:	3220000	1 of 1 sheet	Original Size:	Drawing number:	Volume 1 - Design No. 11 of 1 Part 1 number	HDRN-AMBL-1358-OR-CH-0001	A1
Block:	82	Revision:																									
Scale:	as shown	PD:	DM																								
Drawn by:	TJ/CJH	Checked by:																									
Approved by:	P. HARRISON	Project No.:	3220000																								
Project No.:	3220000	1 of 1 sheet	Original Size:																								
Drawing number:	Volume 1 - Design No. 11 of 1 Part 1 number	HDRN-AMBL-1358-OR-CH-0001	A1																								



© Crown copyright and database rights 2022 Ordnance Survey 100018821

Proposed Scheme

- 🦢 Feature 1. Junction with A21 at Blackbrooks.
 - 🦢 Reduced speed limit from existing 50mph, down to 40mph.

Community support; 94.8%

- 🦢 Feature 2. Transition from 40mph to 20mph Southern end of village.
 - 🦢 Construction of a new Priority working feature at the beginning of the 20mph zone, with priority given to vehicles leaving the village (southbound)
 - 🦢 Alternatively, realigning of Kerbs at the Bridge, to create a Priority working feature, with priority given to vehicles leaving the village (southbound)

Community support; 92.2%


- 🦢 Feature 3. Priority feature adjacent to village Pump.
 - 🦢 Construction of a Priority working feature with priority given to Southbound vehicles, comprising a new Traffic Island.


Community support; 87.8%

- 🦢 Feature 4. Priority feature adjacent to the Brickwall Hotel.
 - 🦢 Construction of a Priority working feature with priority given to Northbound vehicles. The Priority feature would comprise a new Build-out with priority markings and a simple Pedestrian crossing facility would be incorporated.

Community support; 87.0%

Proposed scheme (cont...)

 Feature 5. Priority feature North of the Village Hall at the end of 20mph zone.


 Construction of a new Priority working feature, with vehicles approaching the village from the North giving way to vehicles exiting the village.


Community support; 92.2%

 Feature 6. reduced speed limit from Village Hall to Stream Lane junction.

 Including road markings and regular signage.

Community support; 96.6%

 Alternative to Feature 6. Extend 40mph for the full 50mph stretch to village boundary (Sandrock Hill, to Beech Farm)

 Requiring additional data collection, surveys and appraisal. This feature envisages speed reduction from 50mph to 40mph for the length of the existing 50mph zone and may require additional traffic-calming features to be installed.

Community support; 96.6%

 Stream Lane. To remain unchanged

 Chapel Hill. To remain unchanged.

Examples of potential calming features

A



B



Examples of potential calming features (cont...)

C



D



...more examples

E



F



The process so far, and the next steps

- ✔ Identify the need for traffic-calming in Sedlescombe.
- ✔ Determine the level of potential support from various stakeholders.
- ✔ Commission data collection.
- ✔ Draw up detailed plans
- ✔ Present full detailed plans for community consultation.
- ✔ Obtain community support.
- ✔ Commission feasibility appraisal by East Sussex Highways team.
 - ? Apply for Match-funding.
 - ? Preliminary design consultation with ESCC/Highways.
 - ? Safety Audit & consultation with key parties (Emergency services/Sussex Police authority/Highways).
 - ? Detailed Design.
 - ? Construction.